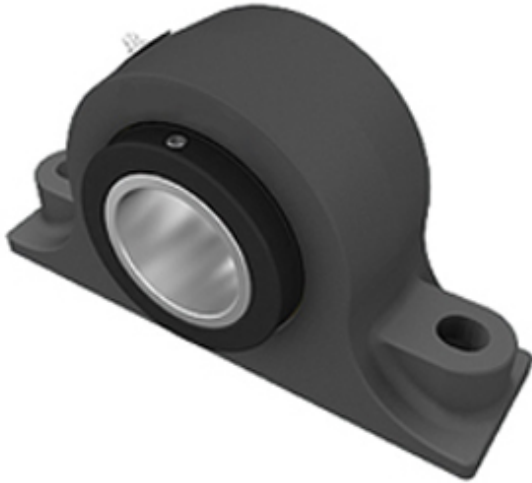




Bearing Mexico, S.A.

3 Inch | 76.2 Millimeter x 4.5 Inch | 114.3
 Millimeter x 3.125 Inch | 79.38 Millimeter
 TIMKEN E-P2B-TRB-3 Pillow Block Bearings



Bearing No. E-P2B-TRB-3

E-P2B-TRB-3 Bearing 2D drawings and 3D CAD models

Category	Pillow Block Bearings
Inventory	4.0
Manufacturer Name	TIMKEN
Minimum Buy Quantity	N/A
Weight	13.17
EAN	0053893597638
Product Group	M06288
Number of Mounting Holes	2
Mounting Method	Concentric Collar
Housing Style	2 Bolt Pillow Block
Rolling Element	Tapered Roller Bearing
Housing Material	Cast Iron
Expansion / Non-expansion	Non-expansion
Mounting Bolts	3/4 Inch
Relubricatable	Yes
Seals	Double Lip Radial
Housing Configuration	1 Piece Solid
Inch - Metric	Inch
Other Features	Double Row Wide Inner Race With Set Screw
Long Description	2 Bolt Pillow Block; 3" Bore; 3-1/8" Base to Center Height; Concentric Collar Mount; Tapered Roller Bearing; 9-5/16" Minimum Bolt Spacing; 9-11/16" Bolt Spacing Maximum;



Bearing Mexico, S.A.

	Relubricat
Category	Pillow Block
UNSPSC	31171511
Harmonized Tariff Code	8483.20.40.80
Noun	Bearing
Keyword String	Pillow Block
Manufacturer URL	http://www.timken.com
Manufacturer Item Number	E-P2B-TRB-3
Weight / LBS	29
Bolt Spacing Minimum	9.313 Inch 236.54Millimeter
Nominal Bolt Center to Center	9.5 Inch 241.3 Millimeter
Bolt Spacing Maximum	9.688 Inch 246.075Millimeter
B	3.125 Inch 79.38 Millimeter
Actual Bolt Center to Center	0 Inch 0Millimeter
D	4.5 Inch 114.3 Millimeter
d	3 Inch 76.2 Millimeter
Shaft Size	3 in
Shaft Size Type	Imperial
Weight	29 lb
UPC Code	053893597638
Dimension B	4-1/2 in
Dimension L	12 in
Dimension A	3 in
Dimension J Min.	9-5/16 in
Dimension J Max.	9-11/16 in
Bolt Diameter	3/4 in
Dimension N	27/32 in
Dimension N ₁	1 in
Dimension H ₁	1-7/8 in



Bearing Mexico, S.A.

Dimension H ₂	6-1/4 in
Dimension d ₁	4-23/32 in
Dimension H	3-1/8 in
e	0.46
X (if $F_a/F_r \leq e$)	0.87
Y (if $F_a/F_r \leq e$)	1.87
X (if $F_a/F_r > e$)	0.7
Y (if $F_a/F_r > e$)	2.26
K Factor	1.30
C ₉₀ Dynamic Load Rating ¹	12300 lb
C ₀ Static Load Rating	61200 lb
F _{a-max} Maximum Permissible Thrust Load ²	5181 lb
F _{r-max} Maximum Allowable Slip Fit Radial Load ³	10000 lb
Max. Speed ⁴	2060 rpm
Note	Note: All units have a 1/8 pipe thread grease fitting The Maximum Permissible Thrust Load applies to conditions of slip fit with set screw mounting or in applications where a large moment loading occur